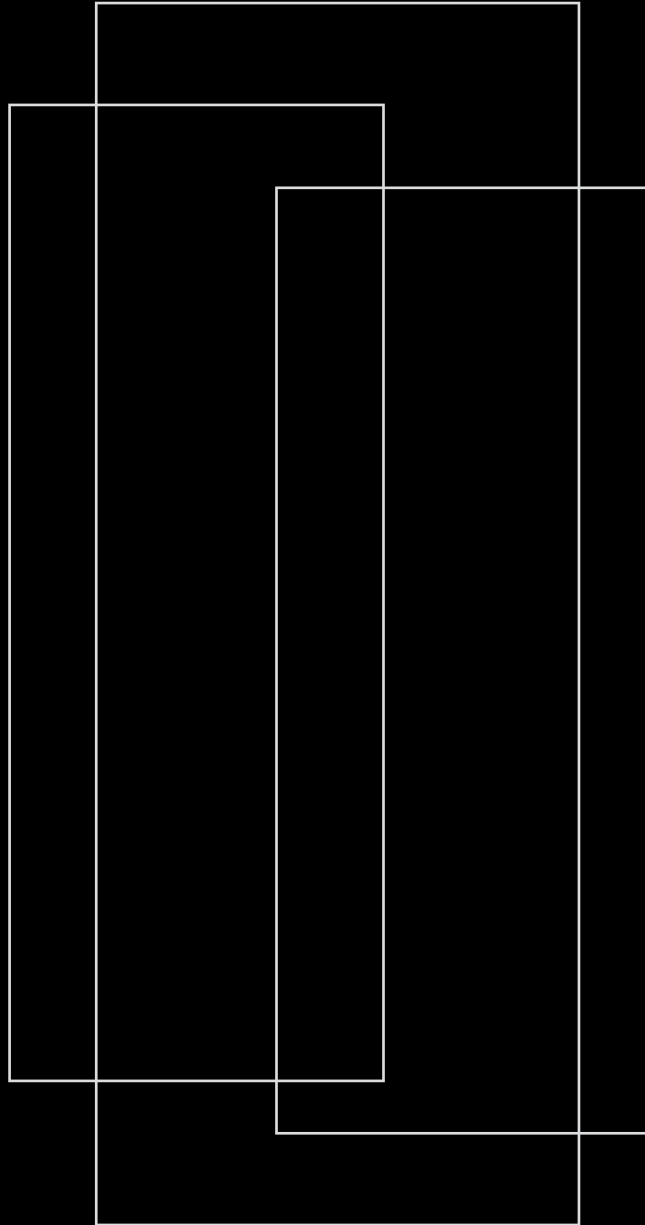


■ Kalesinterflex



**FACADE CATALOG**

FIXING DETAILS





## Technical Specifications for Kalesinterflex® Hidden Clips Fitted Facade System

### KALESINTERFLEX®

Facade material composed with porcelain ceramic front face in dimensions 1000x3000mm and 1200cmx3600mm and in lower dimensions, 3mm- and 5mm-thick with back face laminated with fiber mesh, double-component polyurethane and epoxy resin (for concave and convex applications only).

### BEARERS

— A6063-T6- quality bearer main aluminum anchorage connected to concrete:  
L (70-150)x50x4mm h=150 and aluminum partition anchorage: L (70-150)x50x4mm h=80  
— A6063-T6-quality and 2mm-wall-thick aluminum T profiles (Axis ranges and dimensions are determined according to building height and wind load)  
— A6063-T6-quality bearer clips with 30x56mm cross section  
— A6063-T6-quality horizontal aluminum hanger profiles (Axis ranges, quantity and cross sections of horizontal profiles are determined according to building height and wind load.)

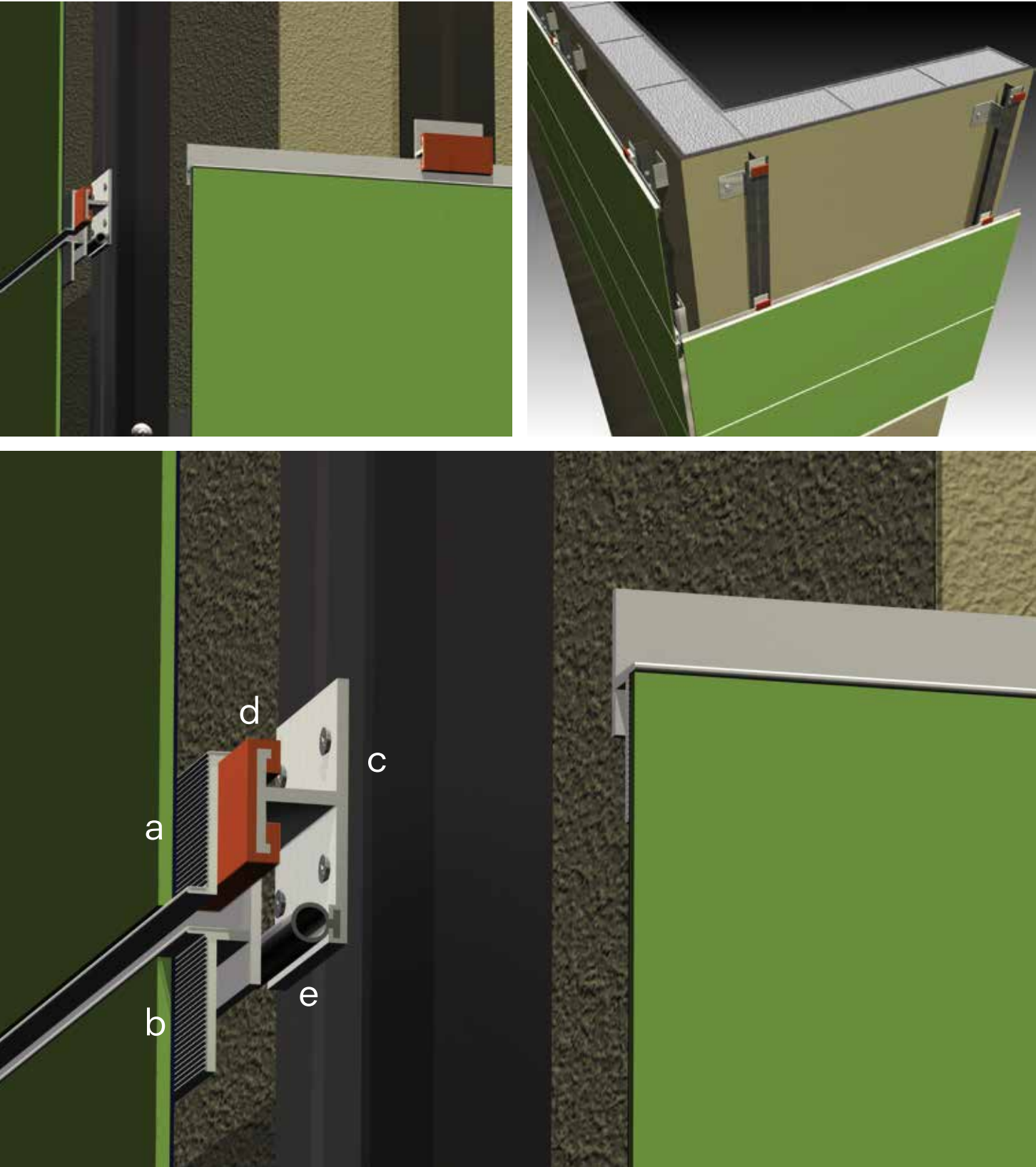
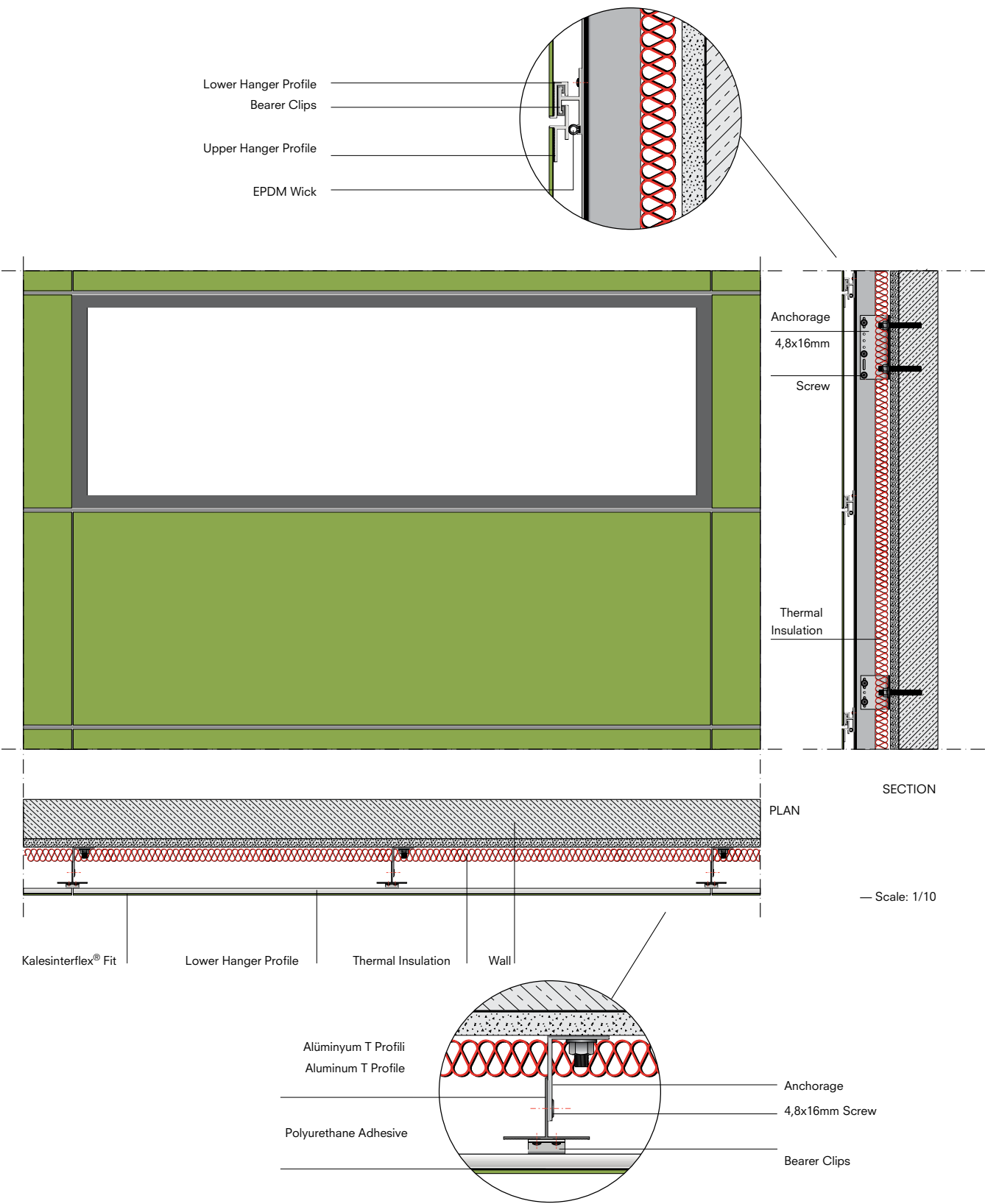
### FITTINGS

Wall – Anchorage connection:  
M10x100 dowel, bolt, nut, washer  
Anchorage - vertical bearer T profile connection = 2 pieces of 4,8x16mm cross recessed pan head screws  
Vertical bearer clips connection = 2 pieces of 4,8x16mm cross recessed pan head screws  
— Types and quantity of fittings are determined according to building height and wind load.

### ASSEMBLY

Based on the measured drawings to be prepared from the site, the Kalesinterflex® panel layout drawings are prepared as per the standard details (as provided as an appendix to the specifications) in 3mm and 5mm thickness (fiberglass reinforced in the back) and dimensions of 1000x3000mm and 1200x3600mm. Aluminum horizontal mounting profiles are glued using polyurethane-based adhesives on the back side of the Kalesinterflex® dimensioned based on the project upon determining the axis ranges, quantity and cross sections according to building height and wind load values. Aluminum anchorages are fastened on the façade plane in such a way that the maximum distance from axis to axis is 100 cm based on the project. Vertical bearer aluminum T profiles are fixed on the façade plane at a distance of approximately 8 to 15 cm to the anchorages upon determining the axis ranges and dimensions according to building height and wind load. Porcelain ceramic panels are fixed on T profiles with wick aluminum clips. (Vertical joints must be 3 to 6mm.)





a - Lower Hanger Profile  
b - Upper Hanger Profile  
c - Bearer Clips

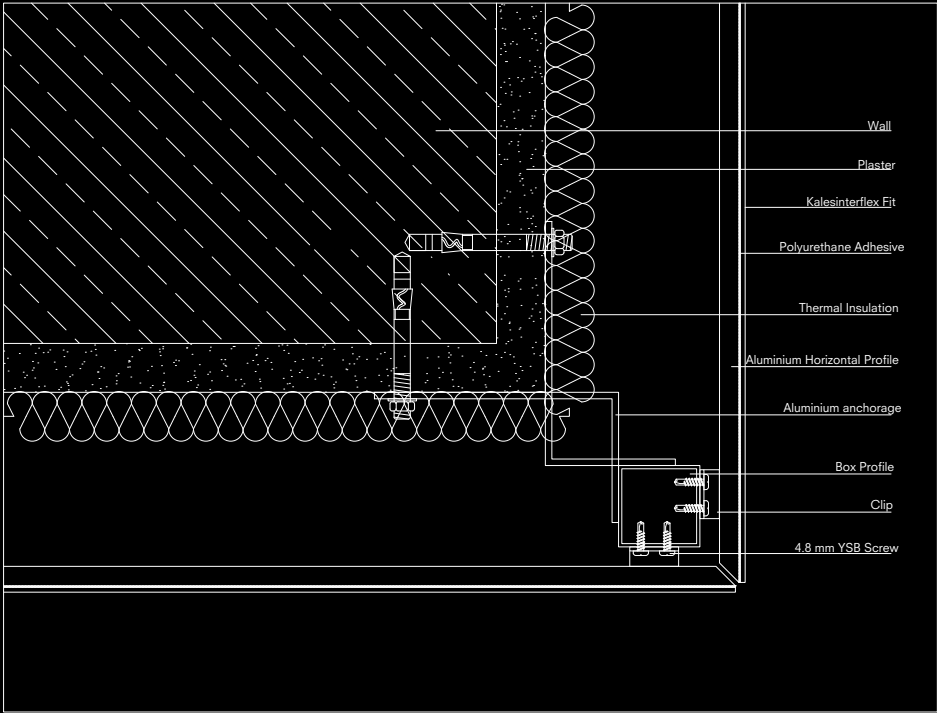
d - Gasket  
e - Gasket

\* The given values are approximate. All measurements of bearing construction will be determined by the facade or static project firm with regards to the facade static calculations.

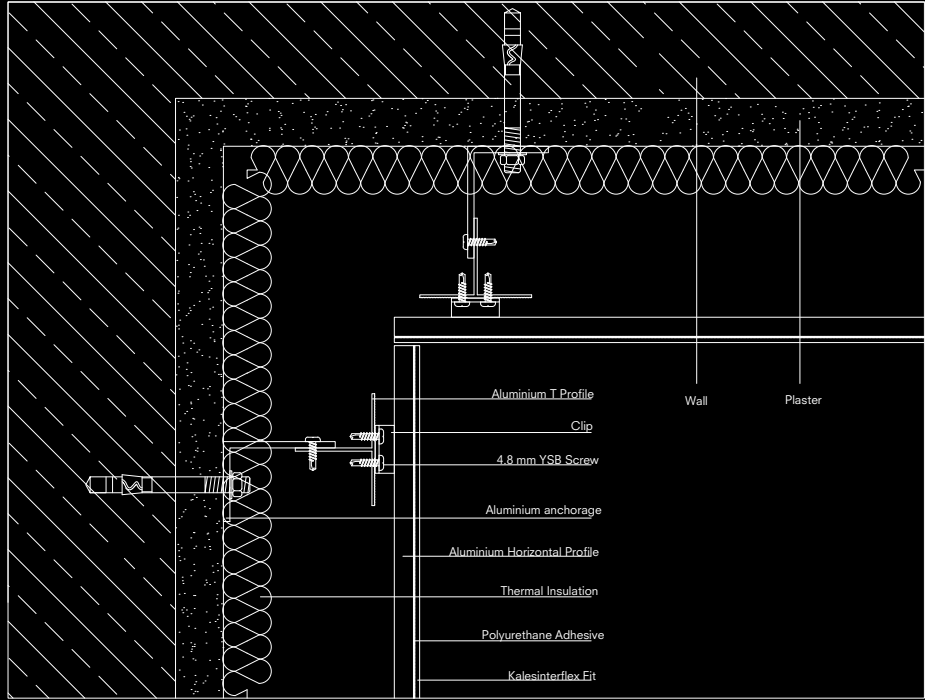


# Internal Corner System Detail

OUTSIDE CORNER

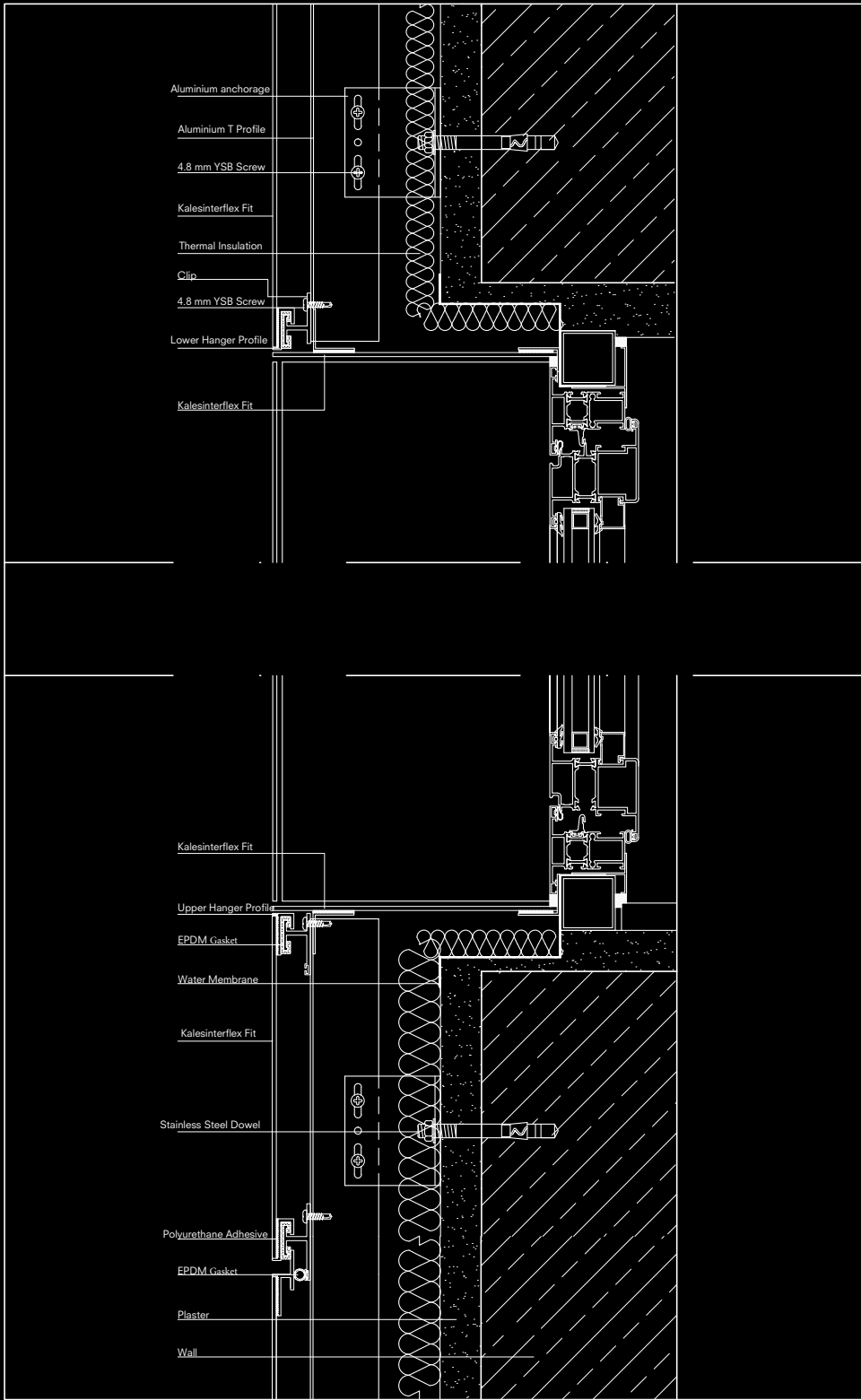


INSIDE CORNER



\* The given values are approximate. All measurements of bearing construction will be determined by the facade or static project firm with regards to the facade static calculations.

# System Details



\* The given values are approximate. All measurements of bearing construction will be determined by the facade or static project firm with regards to the facade static calculations.

“Kale