

# NEW & IMPROVED

## TAC 2.1 THERMAL ASSEMBLY CLIP

### MANUFACTURED WITH

- TAC 2.1 Thermal Assembly Clip is made of cold-formed steel
- A653 CS Type-B G90 Galvanized steel formed into clip
- 14ga thickness
- Fitted with HDPE thermal pads for thermally broken assembly

### PERFORMANCE CRITERIA

- Able to accommodate insulation thickness ranging from 4" to 6"
- Suitable for both Vertical and Horizontal oriented installation
- Thermal pad can be re-adjusted to fit on either face of the clip
- Stiffening rib reinforcements for high-wind loads and heavy dead-loads
- Non-combustible construction. Able to withstand CAN/ULC S-134 fire test
- Tested to standards and certified

### MEETING ARCHITECTURAL NEEDS

- Technical support available upon request
- Standard design details available upon request
- CSC specification available upon request
- Component and accessory drawings available upon request
- Verified for thermal assembly analysis and structural testing / systems
- Universal function, compatible with most facade systems
- Compatible with a variety of substrates; steel studs, cast-in concrete and CMU

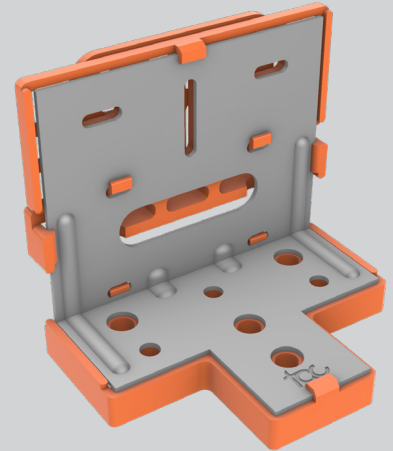
### DESIGNED WITH INSTALLERS & CONTRACTORS IN MIND

- Light-weight construction and components. Easy to handle
- Available in boxes of 50pcs/box
- Installed with two screws per clip, as per substrate properties
- Up to 1/2" built-in adjustability without the use of third-party shims
- Installation guidelines and training available upon request
- Spacing recommendations per projects' structural and thermal analysis available.
- Consultation per project needs available upon request
- CAD library available upon request for seamless project integration
- 'Helping hand' removable accessory for additional ease of installation

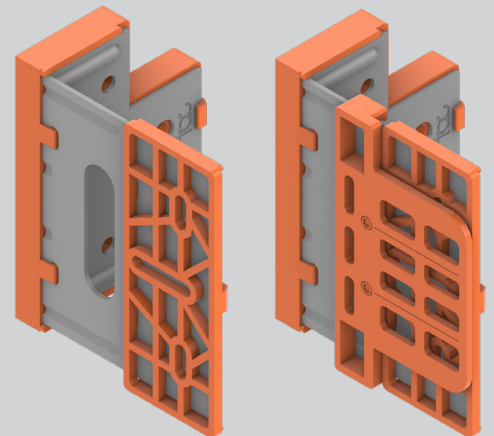
### FOR ASSISTANCE, DOCUMENTATION, SAMPLE AND / OR QUESTIONS

- Patrick Gordon / Regional Sales / [patrick@etgcc.com](mailto:patrick@etgcc.com) / +1 (416) 788-4650
- Ferhat Bay / Technical Sales / [ferhat@corearch.ca](mailto:ferhat@corearch.ca) / +1 (647) 867-6740
- Emre Guran / Design Sales / [emre@corearch.ca](mailto:emre@corearch.ca) / +1 (647) 782-3488

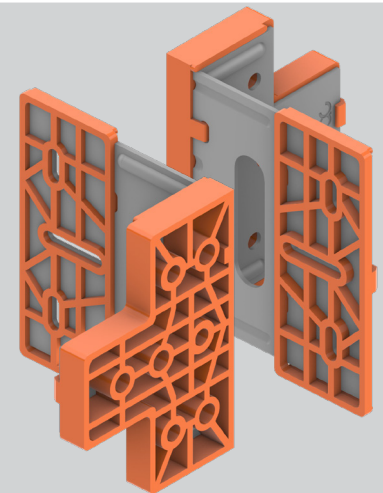
# tac 2.1



Different size fastener holes for better substrate accommodation



Helping-Hand Accessory  
(removable add-on)



Interchangeable Thermal Separation Pads on either side of the clip